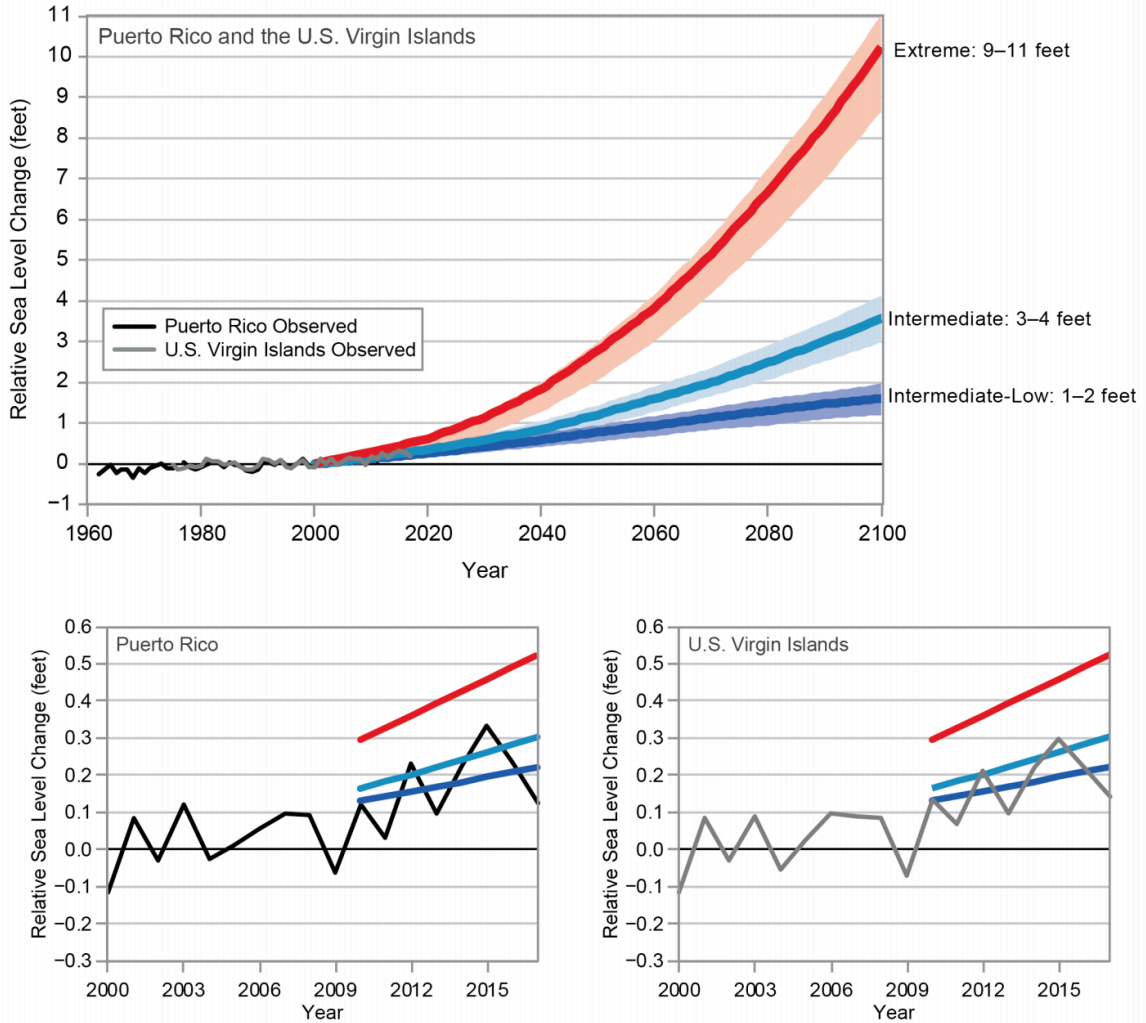


## Observed and Projected Sea Level Rise



**Figure 20.6:** (top) Observed sea level rise trends in Puerto Rico and the U.S. Virgin Islands reflect an increase in sea level of about 0.08 inches (2.0 mm) per year for the period 1962–2017 for Puerto Rico and for 1975–2017 for the U.S. Virgin Islands. The bottom panels show a closer look at more recent trends from 2000 to 2017 that measure a rise in sea level of about 0.24 inches (6.0 mm) per year. Projections of sea level rise are shown under three different scenarios of Intermediate-Low (1–2 feet), Intermediate (3–4 feet), and Extreme (9–11 feet) sea level rise. The scenarios depict the range of future sea level rise based on factors such as global greenhouse gas emissions and the loss of glaciers and ice sheets. Sources: NOAA NCEI and CICS-NC.