

Infrastructure and Economic Vulnerabilities

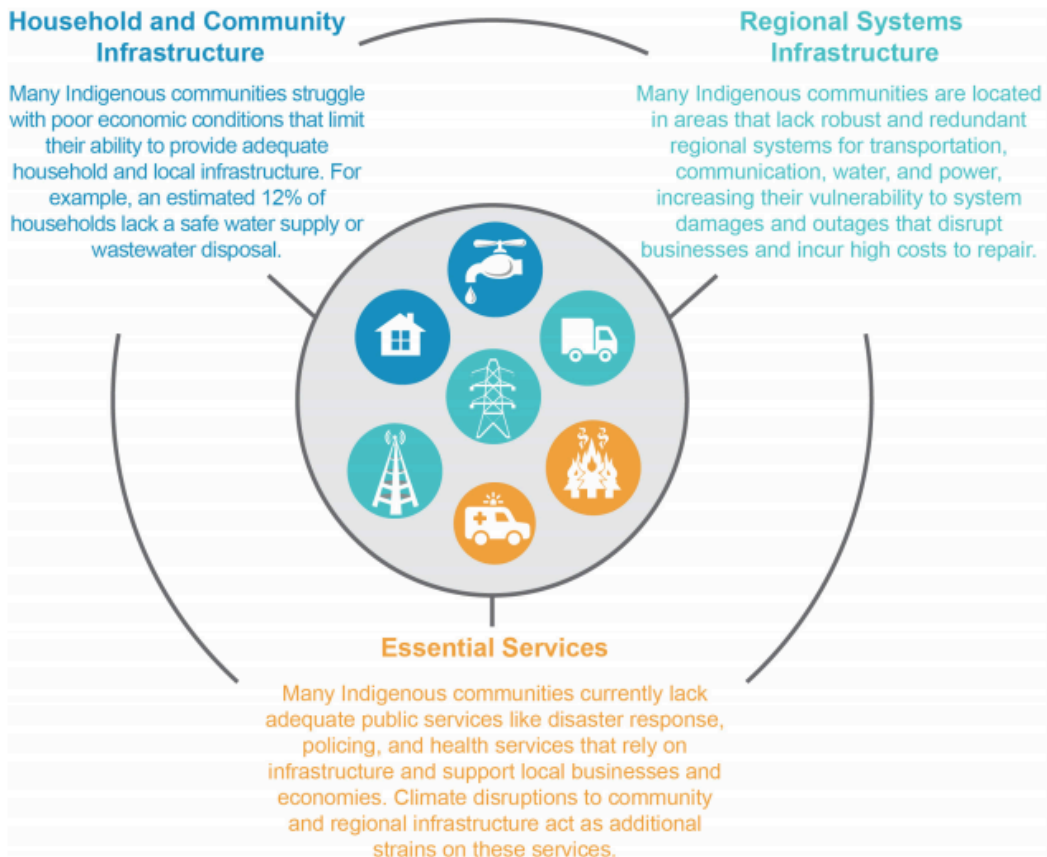


Figure 15.2: Communities' economic potential and livelihoods rely on infrastructure and the essential services it delivers, and many tribes and Indigenous communities already face acute infrastructure challenges that make them highly vulnerable to climate impacts.²² Indigenous peoples along the coasts and in the islands, the Southwest, and Alaska have experienced the most extensive infrastructure-related impacts thus far (Ch. 8: Coastal; Ch. 20: U.S. Caribbean; Ch. 25: Southwest; Ch. 26: Alaska; Ch. 27: Hawai'i & Pacific Islands). Source: USGCRP.