



Recent patterns and possible climate-driven changes in Southeastern wildland fire smoke impacts

Megan Johnson

PhD Candidate

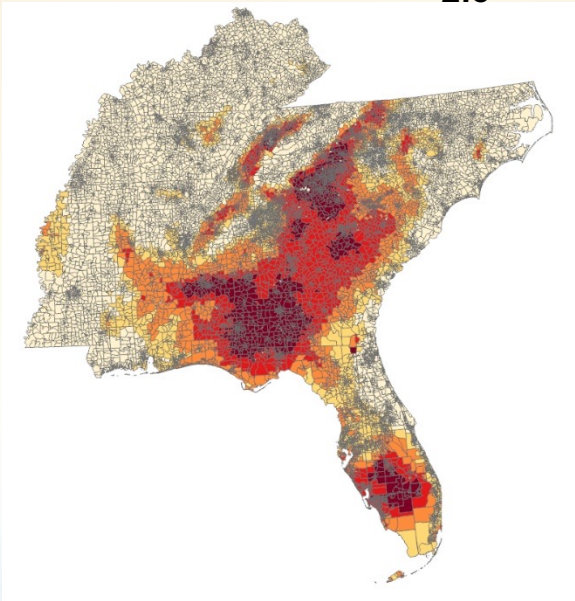
Dept. Civil, Construction, Environmental Engineering

mmjohns7@ncsu.edu

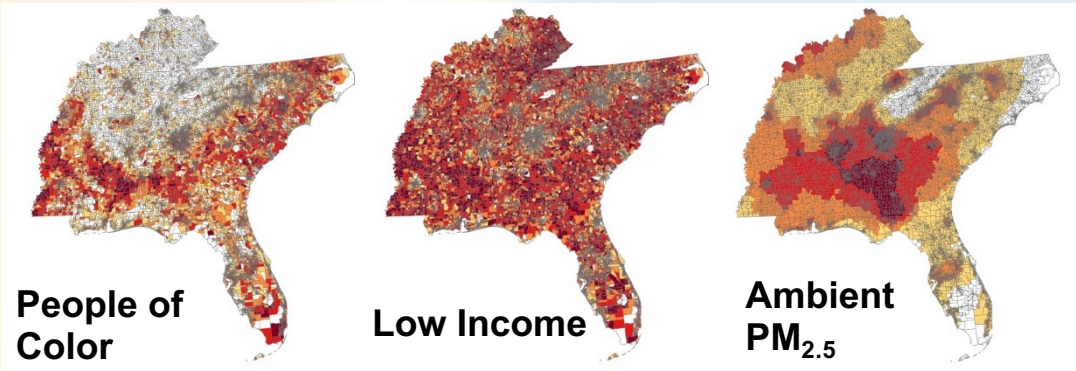
We examine the following questions:

- Where are the greatest smoke impacts?
- Are those experiencing the most smoke disproportionately impacted?
- How do impacts differ between wild- and prescribed fire?
- How might these impacts change at mid-century due to projected fire activity in the region?

All Smoke PM_{2.5}

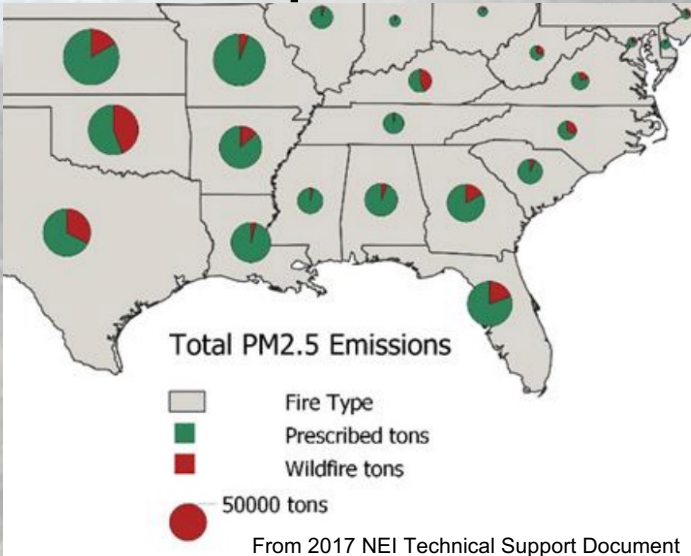


EJSCREEN Indices

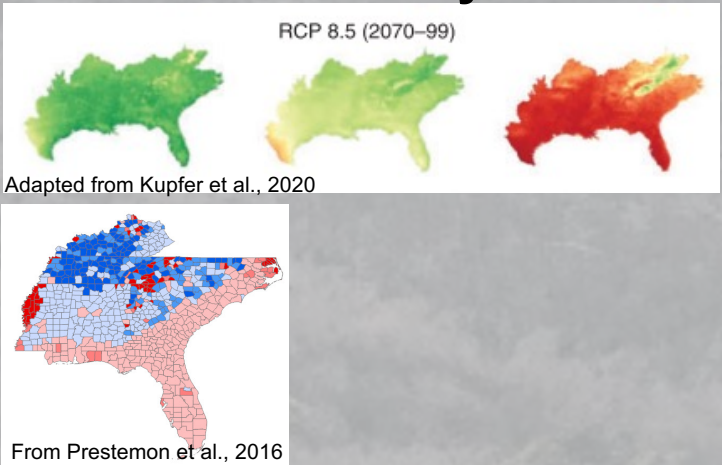


Smoke Impacts

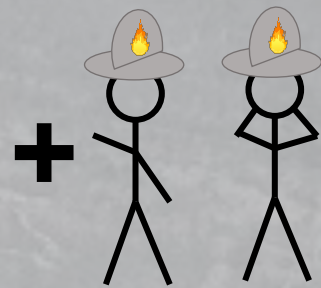
Source-specific Smoke



Projected Changes in Fire Activity



Manager input



Future smoke scenario



Megan Johnson

PhD Candidate

Dept. Civil, Construction, Environmental Engineering

mmjohns7@ncsu.edu

Outcomes:

- Better idea of regional smoke impacts on air quality and on population
 - Separating prescribed fire from other wildland fire
- Representation of possible future smoke distribution
 - Changes in impacts, fire activity
 - Informed by manager input
- Regional burners' plans, concerns for future of fire